

UNIVERSAL SUBMICRON HYBRID COMPOSITE

BRILLIANT EverGlow[®]

Product Guideline



CONTENT

BRILLIANT EverGlow	02
Filler technology	04
Technical data	05
Polishability	08
Gloss retention	09
Roughness after toothbrush abrasion	10
Compressive strength	11
Stickiness of composite paste	12
Flexural fatigue strength	13
Wear resistance	14
Bond strength	15
Antibacterial properties	16
Questions and Answers	17

BRILLIANT EverGlow

ENDURING GLOSS – MADE BRILLIANT

BRILLIANT EverGlow is a sculptable Universal Submicron Hybrid Composite that allows for high aesthetic restorations with a reduced spectrum of shades. It is a true versatile material which fully meets high requirements for anterior and posterior restorations, offering simple handling, excellent blend-in properties and long-lasting brilliance.

FEATURES AT A GLANCE

- Exceptional polishability and long-lasting brilliance
- Aesthetic single-shade restorations
- Versatile shade system with three translucency levels
- Excellent sculptability and smooth consistency
- Good wettability with minimal stickiness to the instrument

BRILLIANT EverGlow contains antibacterial zinc oxide
(see Atmara, S., Gül, K. & Cicek, R., 1997, S. 595-597, Phadmavathy, N. & Vijayaraghavan, R., 2008)

INDICATIONS

BRILLIANT EverGlow is applied in the 2 mm increment technique and is indicated for:

- Direct restorations of all cavity classes
- Luting and repair of composite and ceramic restorations

BRILLIANT EVERGLOW FLOW

Complementing the product assortment, BRILLIANT EverGlow is also available in a flowable consistency. The material combines a low viscous consistency with high stability and thixotropy, allowing a controlled and comfortable application.



DOWNLOAD THE
PRODUCT BROCHURE



everglow.coltene.com



SHADE SPECTRUM

The BRILLIANT EverGlow line comprises 7 universal, 2 translucent and 5 opaque shades. They integrate so well into the existing surroundings, that one shade covers two VITA shades at a time, resulting in A1/B1 or A2/B2, for example.

Universal shades:

Can be applied separately or in combination with opaque and/or translucent shades.

Translucent shades:

Can be applied separately or following the universal shade as a coating layer.

Opaque shades:

The masking ability is controlled by the thickness of the layer. To achieve an optimal blend-in effect, it is suggested to keep the total opaque shade layer thickness as small as possible and to cover it with universal shades.

For further information on shade management, please see "Questions and Answers".

HOW CLEVER!
7 basic shades is all you need.

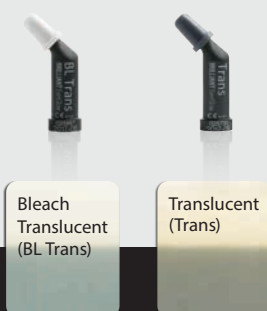
UNIVERSAL

- aesthetic single shade restorations
- anterior and posterior



TRANSLUCENT

- shape and shade corrections to enhance individual aesthetics
- reconstruction of incisal edges



OPAQUE

- masking dark spots
- level out chroma differences



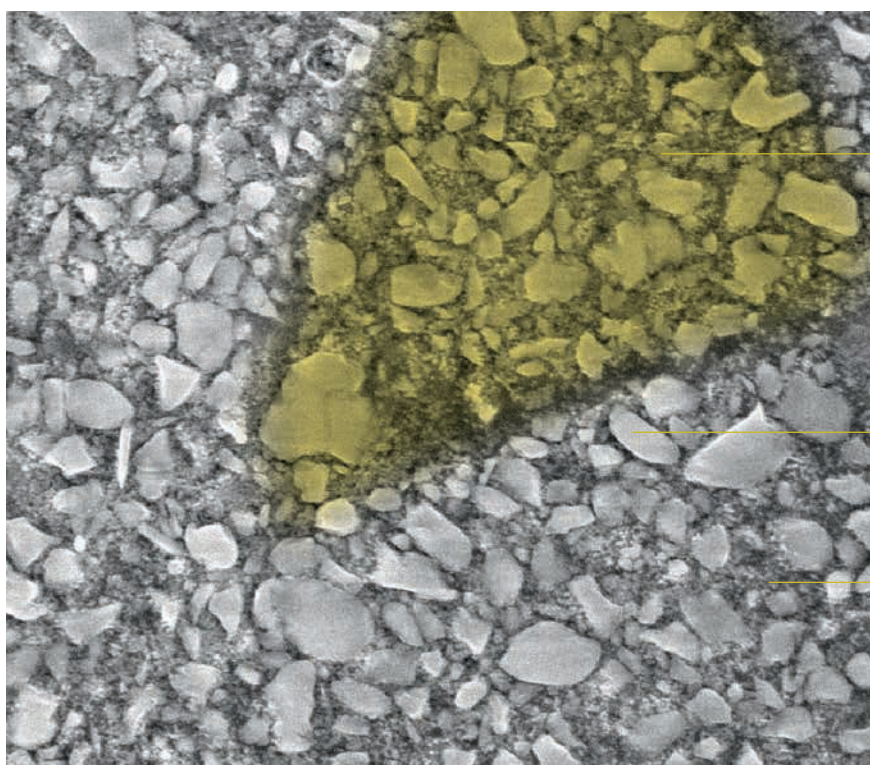
SCIENTIFIC DOCUMENTATION



FILLER TECHNOLOGY

BRILLIANT EVERGLOW IS A SUBMICRON HYBRID COMPOSITE OF THE LATEST GENERATION.

The average particle size of the dental glass filler has been reduced to below 1 micron to achieve maximum ease of polishability and gloss retention. This was also accomplished by the composition of the pre-polymerised fillers corresponding to the composition of the composite itself. Further, the fillers' anchoring has been optimised to prevent plucking. The formulation has been adjusted without compromising neither the good handling characteristics of the composite paste nor the mechanical strength of the cured composite.



Pre-polymerised filler containing dental glass and nanosilica identical to the composition of the composite itself.

Dental glass submicron

Nanosilica aggregated and non-aggregated

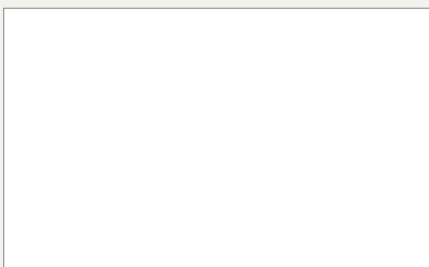
SEM picture of BRILLIANT EverGlow after toothbrush abrasion
Source: internal data



WATCH THE BRILLIANT
EVERGLOW VIDEO

everglow.coltene.com/mov/en

© COLTENE – www.coltene.com



Coltène/Whaledent Ltd.

The President Suite
Kendal House, Victoria Way
Burgess Hill, West Sussex
RH15 9NF / UK
T +44 1444 235486
F +44 1444 870640
info.uk@coltene.com

Coltène/Whaledent AG

Feldwiesenstr. 20
9450 Altstätten / Switzerland
T +41 71 757 53 00
F +41 71 757 53 01
info.ch@coltene.com